

Top Stories This Week

- Coal India Q2 Cons Net Profit At `2,543.8 Cr Vs `2,192.4 Cr (YoY) Cons Net Sales At `16,957 Cr Vs `15,678 Cr (YoY)
- JSPL Q2: Net Loss At ` 618 Cr Vs Profit Of `422 Cr (YoY) Total Income Loss At ` 47,428 Cr Vs Profit Of `51,831 (YoY)
- Infosys concall -Retain FY16 growth guidance of 10-12 percent in constant currency terms. Expect Q3 to be soft, momentum to come back in Q4
- ICICI Bank says -Board approves sale of 6 percent shareholding in ICICI Prudential Life Insurance.
- DLF gets Competition Commission of India (CCI) approval for Rs 1,990 crore deal with GIC
- Reliance Infrastructure -Proceeds to complete acquisition of Pipavav Defence. Open offer to open on December 2 & close on December 15
- Competition Commission of India says -Penalty on Jet Airways at Rs 151.69 crore, Rs 63.74 crore on IndiGo & Rs 42.48 crore on SpiceJet for concerted action in fixing fuel surcharge
- Cabinet approves uniform gas marketing margin for supply to urea, LPG units.
- Reliance Infrastructure -Proceeds to complete acquisition of Pipavav Defence. Open offer to open on December 2 & close on December 15

Weekly Indices Change

Index	Close	Prev Close	Chg. (%)
SENSEX	25868	25610	1.01
NIFTY	7856	7762	1.21
MIDCAP	10858	10653	1.92
SMLCAP	11367	11125	2.18
METAL	7112	7064	0.68
OIL&GAS	9158	8782	4.28
AUTO	18675	18305	2.02
TECK	5862	5893	-0.53
BANKEX	19470	19362	0.56
IT	10802	10923	-1.11
FMCG	7988	7770	2.81
HC	16449	16345	0.64
PSU	6765	6682	1.24
CD	12297	12039	2.14
POWER	1874	1848	1.41
CG	14512	14178	2.36
REALTY	1275	1294	-1.47

Global Indices

DOW	17824	17245	3.36
NASDAQ	5104	4927	3.59
FTSE	6334	6118	3.53
NIKKEI	19879	19596	1.44
HANGSENG	22754	22396	1.60

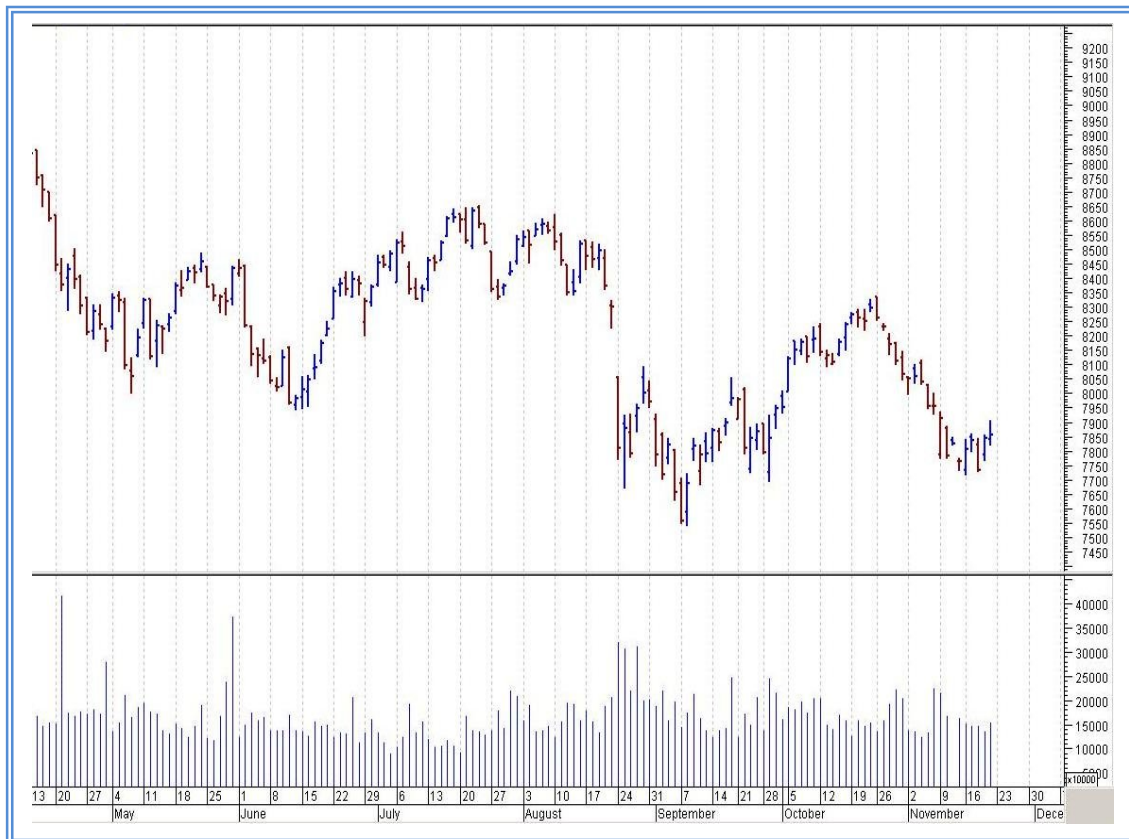
Top Gainers Weekly

Scrip	Price	% Chg
Pioneer Distilleries	215.05	40.01
Godfrey Philips	1267.70	35.64
Patel Integrated Logisti	116.95	30.38
Vakrangee	151.05	29.43
Majesco Ltd	529.00	27.90

Top Losers Weekly

Scrip	Price	% Chg
Dishman Pharma	330.70	15.48
United Breweries	30.25	11.42
Onelife Capital Advisor	57.45	10.86
Tree House Education	222.75	10.56
Kaveri Seed Company	416.95	9.84

Nifty Corner



Support & Resistance						
S3	S2	S1	Nifty	R1	R2	R3
7600	7700	7800	7856	7950	8050	8100
Moving Averages						
20DMA	50DMA	100DMA	200DMA			
8175	8015	8205	8375			

Market Commentary

Indian equity markets registered strong gains in the week ended, on the back of strong show by global equity markets on that day. The markets fell sharply on Wednesday, as global security scares surfaced in the wake of last week's terrorist attack in Paris. The Sensex crossed the psychological 26,000 level during the last trading session of the week but could not hold to that level. The barometer index, the S&P BSE Sensex, and 50-unit Nifty 50 index rose in four out of five trading sessions while they declined in the remaining one trading session in the week ended. For the Next week Nifty likely to trade in the range between 8050 - 8100 in the upper side and 7800 – 7700 in the lower side.

Stocks at 52 wk High

Scrip	Cmp
Allcargo	384.00
Asian Granito	185.95
Intellect	275.10
Maruti Suzuki	4737.90
Petronet LNG	220.25

Stocks at 52 wk Low

Scrip	Cmp
Navneet	86.05
Rallis India	190.10
SAIL	44.40
Sun Pharma	725.85
TCI Finance	29.00

FII Activity

Date	Figures in crore
16/11	-1051.26
17/11	-492.45
18/11	-768.46
19/11	-343.18
20/11	-94.09
NET	-2749.44

DII Activity

Date	Figures in crore
16/11	661.71
17/11	783.02
18/11	759.26
19/11	233.82
20/11	610.16
NET	3047.97

Weekly Stock Idea

Scrip	B/S	Cmp	Tgt
CIPLA	B	647	665
AUROPHARM	B	831	865
M&MFIN	B	245	265
SUDARCHEM	B	116	135
SHALPAINTS	B	142	165

Buy on dips & Sell on rise with Stop-loss of 3%

Volume Breakout Stocks

Scrip	Cmp
RPG Life	229.10
Bombay Rayon	185.70
Gujarat Gas	512.40
OnMobile Global	127.85
GAIL	349.55

Week Ahead

MAJOR RESULTS/AGM MEETING THIS WEEK:

23 NOV: CELESTIAL

25 NOV: UBENGG

27 NOV: SIEMENS, INDIACEM

VISIT US AT: WWW.INDIRATRADE.COM

Disclaimer

This report is for private circulation within the Indira Group. This report is strictly confidential and for information of the selected recipient only and may not be altered in any way, transmitted to, copied or distributed, in part or in whole, to any other person or to the media or reproduced in any form. This report should not be construed as an offer or solicitation to buy or sell any securities or any interest in securities. It does not constitute a personal recommendation or take into account the particular investment objectives, financial situations, or any such factor. The information, opinions estimates and forecasts contained here have been obtained from, or are based upon, sources we believe to be reliable, but no representation of warranty, express or implied, is made by us to their accuracy or completeness. Opinions expressed are our current opinions as of the date appearing on this material only and are subject to change without notice.